

PermWatch: A Tool for In-Situ Research on Users' Awareness and Control of Android Permissions

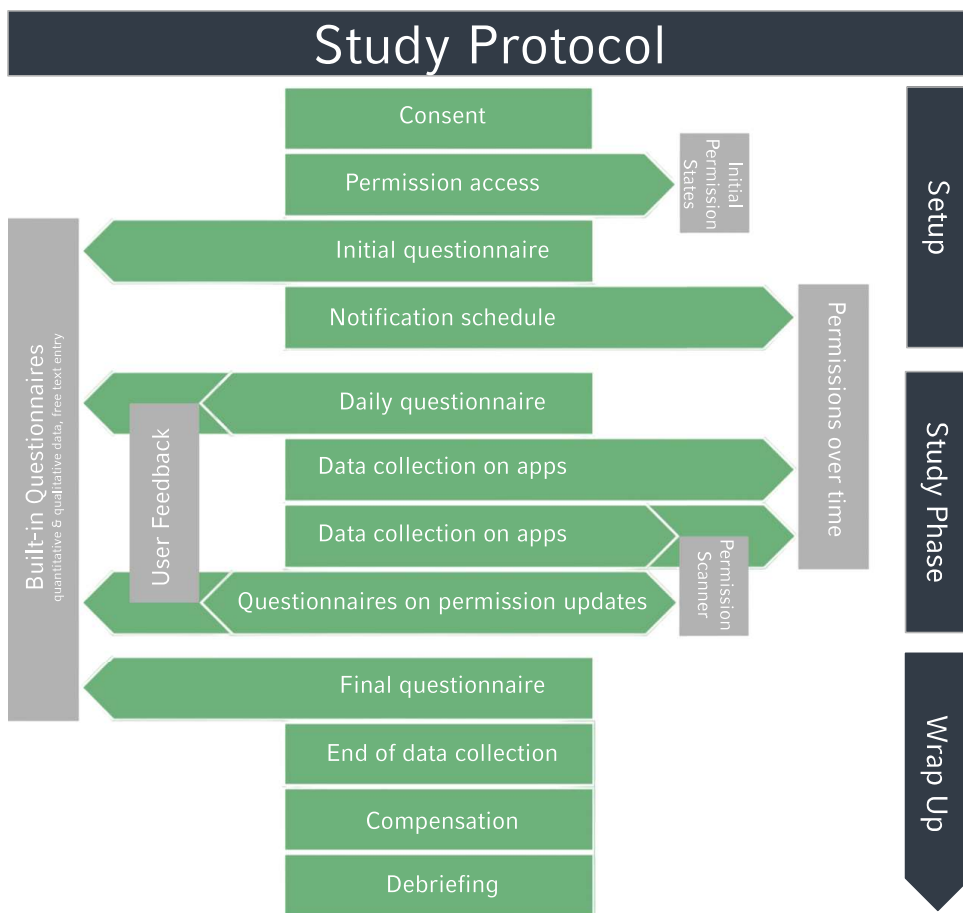
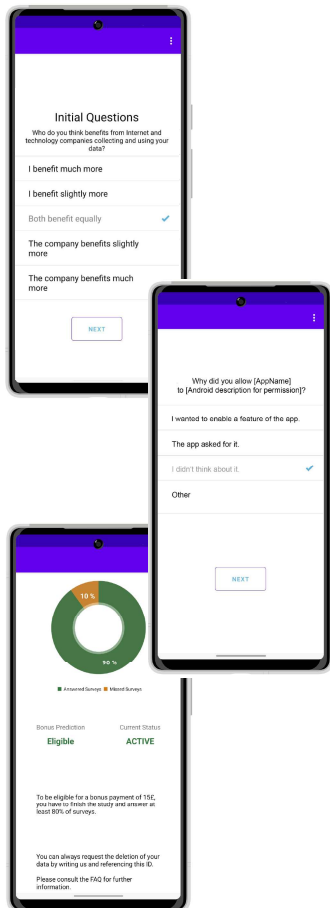
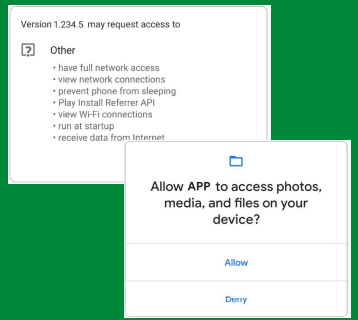
Verena Winterhalter, Anouk Moreno, Sarah Prange, Harel Berger, Florian Alt

Motivation

- current information regarding permissions is not sufficient to inform user decisions
- permission changes happening in the background
- awareness is a prerequisite for control (but not a guarantee for it)

Why in-situ studies? Why permissions?

- in-the-wild study data can reveal actual privacy behaviors
- malware detection through permission analysis



Ethics & Privacy

- built-in consent procedure
- data collection stops automatically
- transparency regarding compensation

Future Research

- different permission types (essential vs optional; install time vs runtime; ...)
- differences related to app usage (duration, frequency, recency, ...)
- permission combinations (pairs or groups, same app or across apps, ...)