



How Effective is Anti-Phishing Training for Children?

Elmer Lastdrager, Inés Carvajal Gallardo
Pieter Hartel, Marianne Junger
University of Twente, the Netherlands



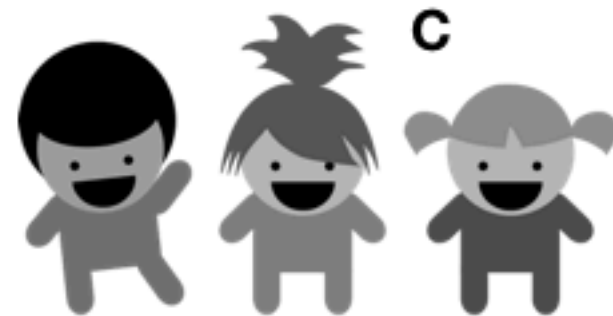
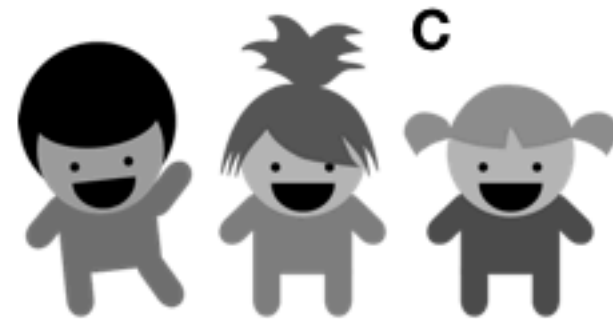




Intervention (training)



Control (no training)





Juni

Montag
Monday
Lundi
Maandag

Dienstag
Tuesday
Mardi
Dinsdag

Mittwoch
Wednesday
Mercredi
Woensdag

Donnerstag
Thursday
Jeudi
Donderdag

Vendredi
Vrijdag

04.06. Pfingstsonntag
05.06. Pfingstmontag
15.06. Fronleichnam*
①* nicht bundesweit

5

A
B
CH
D
F
NL

PUS

6

7

1

8

15

A
CH
D
PL

12

13

14

21

22

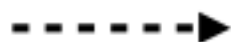
29

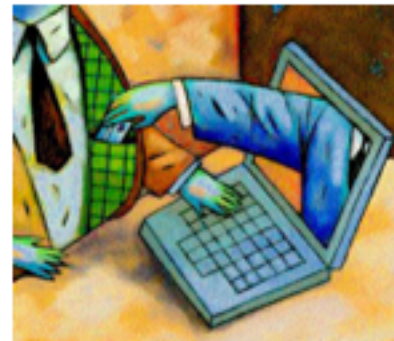
20

Week 0

Week 2

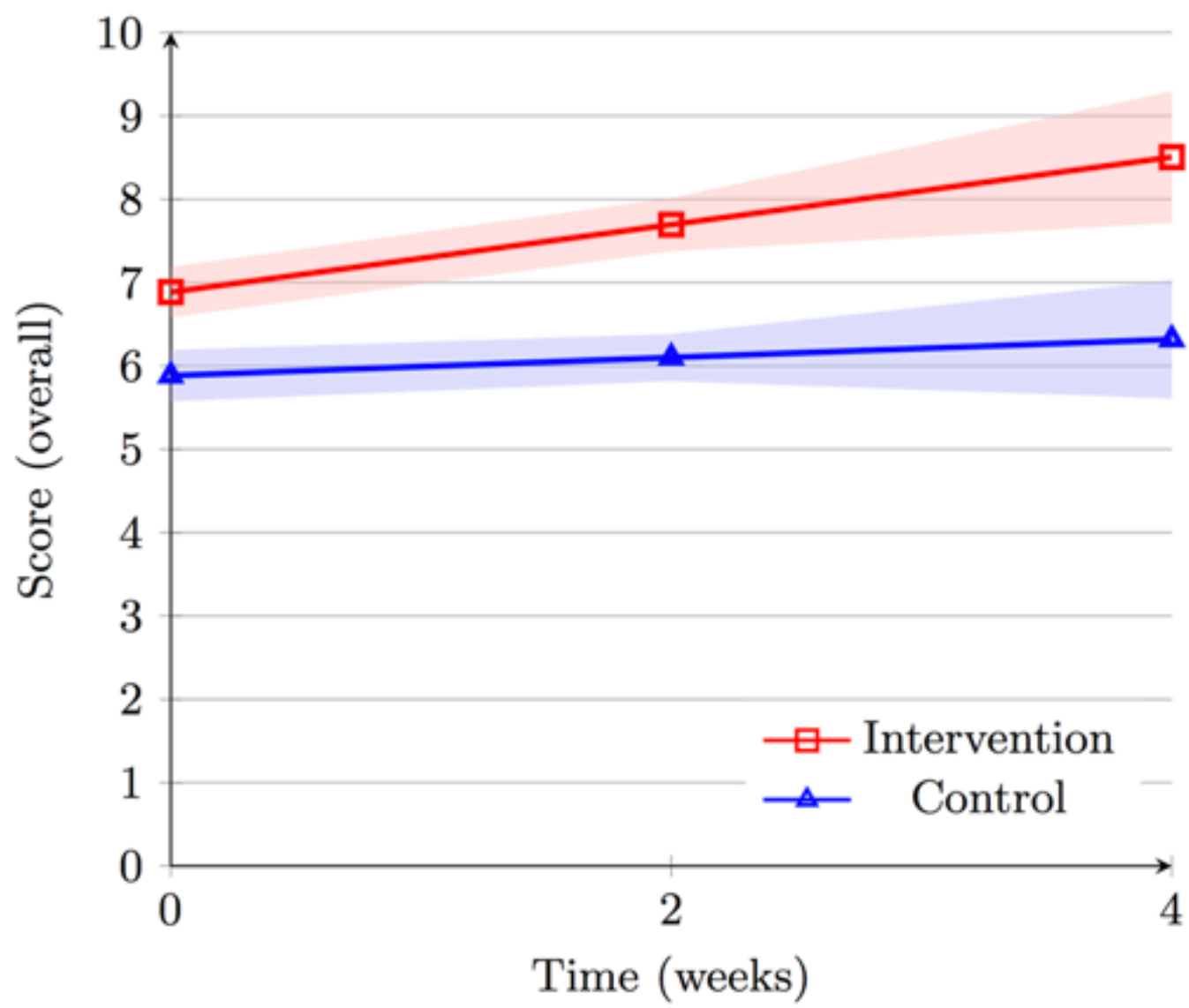
Week 4

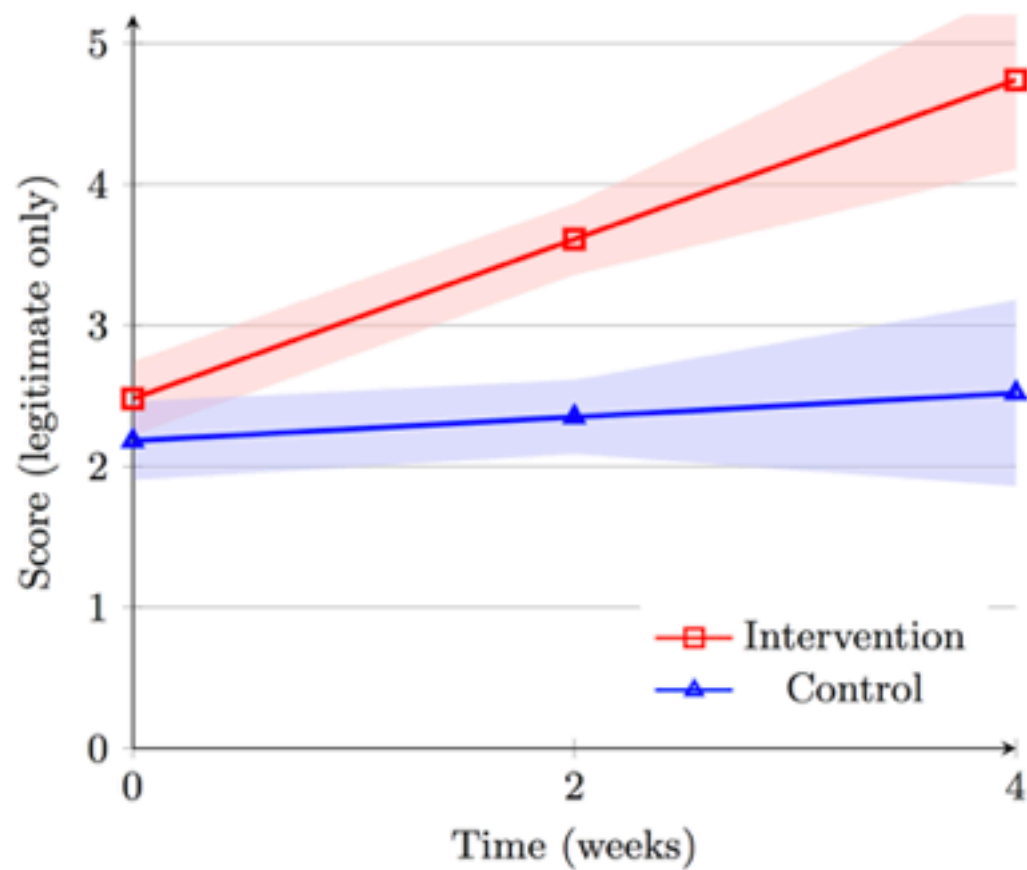
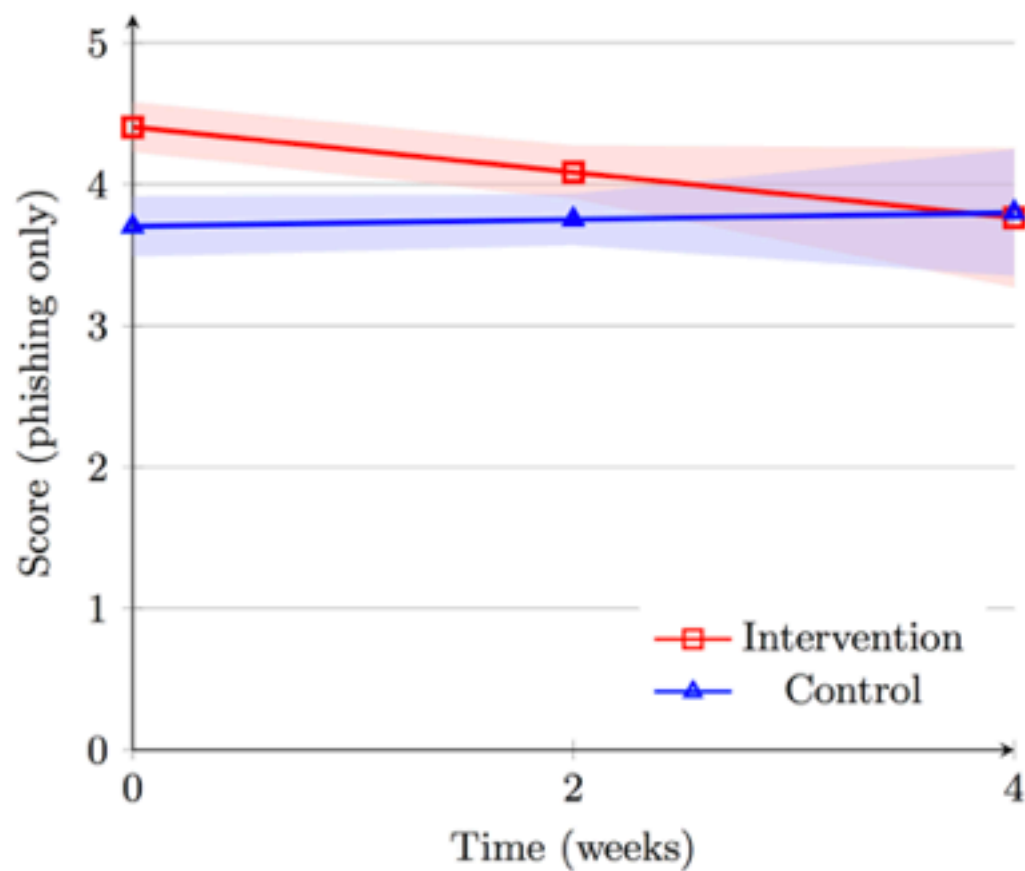
















80 %



27 %



9 %





[illegible]

[Faint handwritten notes on lined paper]

produkt



elmer@lastdrager.com



Lucélia Ribeiro

CC BY-SA 2.0

<https://www.flickr.com/photos/lupuca/8720604364/>



Andis Rado

CC BY-SA 4.0

https://commons.wikimedia.org/wiki/File:OSCAL_2016_-_presentations_and_workshops_12.jpg



Edwind Richzendy Contreras Soto

CC BY 2.0

<https://www.flickr.com/photos/35484468@N07/4894714911>



winnifredxoxo

CC BY 2.0

<https://www.flickr.com/photos/61056899@N06/5751301741>



anujraj

CC BY-NC-SA 2.0 (small edits by me)

<https://www.flickr.com/photos/anujraj/3518252658>

The other images are in the public domain (CC0) or owned by me (the diagrams).